



ADVY

Partnering with you



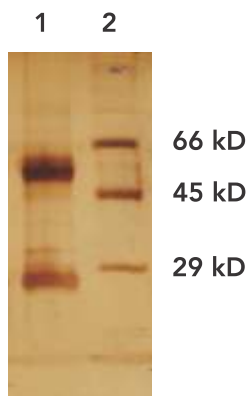
MALARIA

mAb

MONOCLONAL ANTIBODIES

Mouse Monoclonal Malaria PF HRP II antibody 3RG3

Isotype	: IgG2b
Host	: Mouse
Source	: Ascites
Specificity	: Reacts with HRP-II from <i>P. falciparum</i> . Does not react with other Plasmodium species
Purification	: Protein G Affinity chromatography
Form	: Liquid
Concentration	: Lot Specific
Buffer	: PBS, pH 7.2 with 0.05% sodium azide
Storage	: 2-8°C
Purity	: High pure (by reducing SDS PAGE, two distinct band at 50 kD and 25 kD)



Lane1: MAb 3RG3
Lane2: High Molecular weight marker

Features:

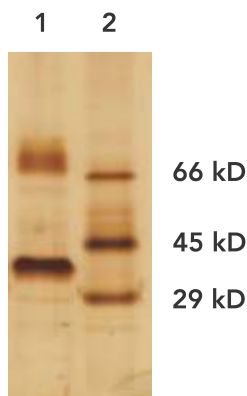
- ▲ This antibody 3RG3 reacts specifically to Pf HRPII only.
- ▲ 3RG3 is ideal for Lateral Flow assay when used as capture Ab paired with 2bRC1 as detector Ab. This information is derived from testing within our laboratories. Other applications have not been tested but use in such assays should not necessarily be excluded.
- ▲ **Performance Characteristics:** The Ab pair can detect parasitemia levels of 200 parasites per microliter of blood (0.004% parasitemia) based on evaluation of microscopically characterized samples of *P. falciparum* infected blood. The test has been evaluated with positive and negative clinical samples with results as follows:

Sample	Total Number	Positive	Negative	Sensitivity (%)	Specificity (%)
Malaria negative	500	0	500	--	100
<i>P. falciparum</i> Positive	86	84	02	97.7*	--
<i>P. vivax</i> Positive	101	0	101	--	100

*Missed specimens had parasitemia less than 200 p/μl. At 200 p/ μl sensitivity was 99%.

Mouse Monoclonal Malaria Pf HRP II antibody 2bRC1

Isotype	: IgG2b
Host	: Mouse
Source	: Ascites
Specificity	: Reacts with HRP-II from <i>P. falciparum</i> . Does not react with other Plasmodium species
Purification	: Protein G Affinity chromatography
Form	: Liquid
Concentration	: Lot Specific
Buffer	: PBS, pH 7.2 with 0.05% sodium azide
Storage	: 2-8°C
Purity	: High pure (by reducing SDS PAGE, two distinct band at 50 kD and 25 kD)



Lane1: MAb 2bRC1
Lane2: Low Molecular weight marker

Features:

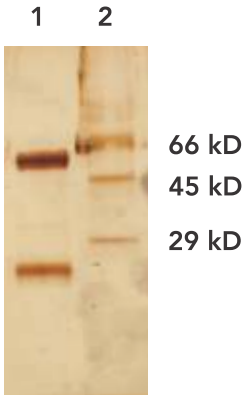
- ▲ This antibody 2bRC1 reacts specifically to Pf HRPII only
- ▲ 2bRC1 is ideal for Lateral Flow assay when used as detector Ab paired with 3RG3 as capture Ab. This information is derived from testing within our laboratories. Other applications have not been tested but use in such assays should not necessarily be excluded.
- ▲ **Performance Characteristics:** The Ab pair can detect parasitemia levels of 200 parasites per microliter of blood (0.004% parasitemia) based on evaluation of microscopically characterized samples of *P. falciparum* infected blood. The test has been evaluated with positive and negative clinical samples with results as follows:

Sample	Total Number	Positive	Negative	Sensitivity (%)	Specificity (%)
Malaria negative	500	0	500	--	100
<i>P. falciparum</i> Positive	86	84	02	97.7*	--
<i>P. vivax</i> Positive	101	0	101	--	100

*Missed specimens had parasitemia less than 200 p/μl. At 200 p/ μl sensitivity was 99%.

Mouse Monoclonal Malaria Pan pLDH antibody 6RC5

Isotype	: IgG1
Host	: Mouse
Source	: Ascites
Specificity	: Specific for all Plasmodium Lactate Dehydrogenase (pLDH) (Malaria)
Purification	: Protein G Affinity chromatography
Form	: Liquid
Concentration	: Lot Specific
Buffer	: PBS, pH 7.2 with 0.05% sodium azide
Storage	: 2-8°C
Purity	: High pure (by reducing SDS PAGE, two distinct band at 50 kD and 25 kD)



Lane1: MAb 6RC5
Lane2: Low Molecular weight marker

Features:

- ▲ This antibody 6RC5 reacts specifically to all plasmodium lactate dehydrogenase pLDH species.
- ▲ 6RC5 is ideal for Lateral Flow assay when used as capture Ab paired with 4RB3 as detector Ab. This information is derived from testing within our laboratories. Other applications have not been tested but use in such assays should not necessarily be excluded.
- ▲ **Performance Characteristics:** The test can detect parasitemia levels of 200 parasites per microliter of blood (0.004% parasitemia) based on evaluation of microscopically characterized samples of *P. falciparum* and *P. vivax* infected blood. The test has been evaluated with positive and negative clinical samples with results as follows:

Sample	Total Number	Positive	Negative	Sensitivity (%)	Specificity (%)
Malaria negative	500	0	500	--	100
<i>P. falciparum</i> Positive	86	84	02	97.7*	--
<i>P. vivax</i> Positive	101	101	0	100	--

*Missed specimens had parasitemia less than 200 p/μl. At 200 p/ μl sensitivity was 99%.



Mouse Monoclonal Malaria PAN pLDH antibody 4RB3

Isotype	: IgG2b
Host	: Mouse
Source	: Ascites
Specificity	: Specific for all Plasmodium Lactate Dehydrogenase (pLDH) (Malaria)
Purification	: Protein G Affinity chromatography
Form	: Liquid
Concentration	: Lot Specific
Buffer	: PBS, pH 7.2 with 0.05% sodium azide
Storage	: 2-8°C
Purity	: High pure (by reducing SDS PAGE, two distinct band at 50 kD and 25 kD)



Lane1: MAb 4RB3

Lane2: High Molecular weight marker

Features:

- ▲ This antibody 4RB3 reacts specifically to all plasmodium lactate dehydrogenase pLDH species.
- ▲ 4RB3 is ideal for Lateral Flow assay when used as detector Ab paired with 6RC5 as capture Ab. This information is derived from testing within our laboratories. Other applications have not been tested but use in such assays should not necessarily be excluded.
- ▲ **Performance Characteristics:** The test can detect parasitemia levels of 200 parasites per microliter of blood (0.004% parasitemia) based on evaluation of microscopically characterized samples of *P. falciparum* and *P. vivax* infected blood. The test has been evaluated with positive and negative clinical samples with results as follows:

Sample	Total Number	Positive	Negative	Sensitivity (%)	Specificity (%)
Malaria negative	500	0	500	--	100
<i>P. falciparum</i> Positive	86	84	02	97.7*	--
<i>P. vivax</i> Positive	101	101	0	100	--

*Missed specimens had parasitemia less than 200 p/μl. At 200 p/ μl sensitivity was 99%.



A pioneer in In Vitro Diagnostics (IVD)

Advy has been an indigenous and innovative pioneer in the development of polyclonal antibodies and native human antigens, and manufacturing of finished reagents in the In Vitro Diagnostic (IVD) industry. We are listed in the EU TRACES database for exporting the antibodies products to EU. Our QMS is compliant with ISO 9001 and EN ISO 13485 Standard.



ANTIBODIES | ANTIGENS | DIAGNOSTIC KITS

CORPORATE OFFICE

17th Floor, Hoechst House,
Nariman Point,
Mumbai - 400 021, India
Tel: +91-22-6656-0900

PLANT ADDRESS

Plot No. A-334/336/338, A-337 & 339
Road No. 25 & 26, Wagle Estate,
Thane - 400 604, India.
Phone: +91 22 2583 0326

EMAIL ADDRESS

info@advychemical.com

Ref. No.: ML-MAB-LBL-01

Rev. No.: 00

Date Issued : 2019-03