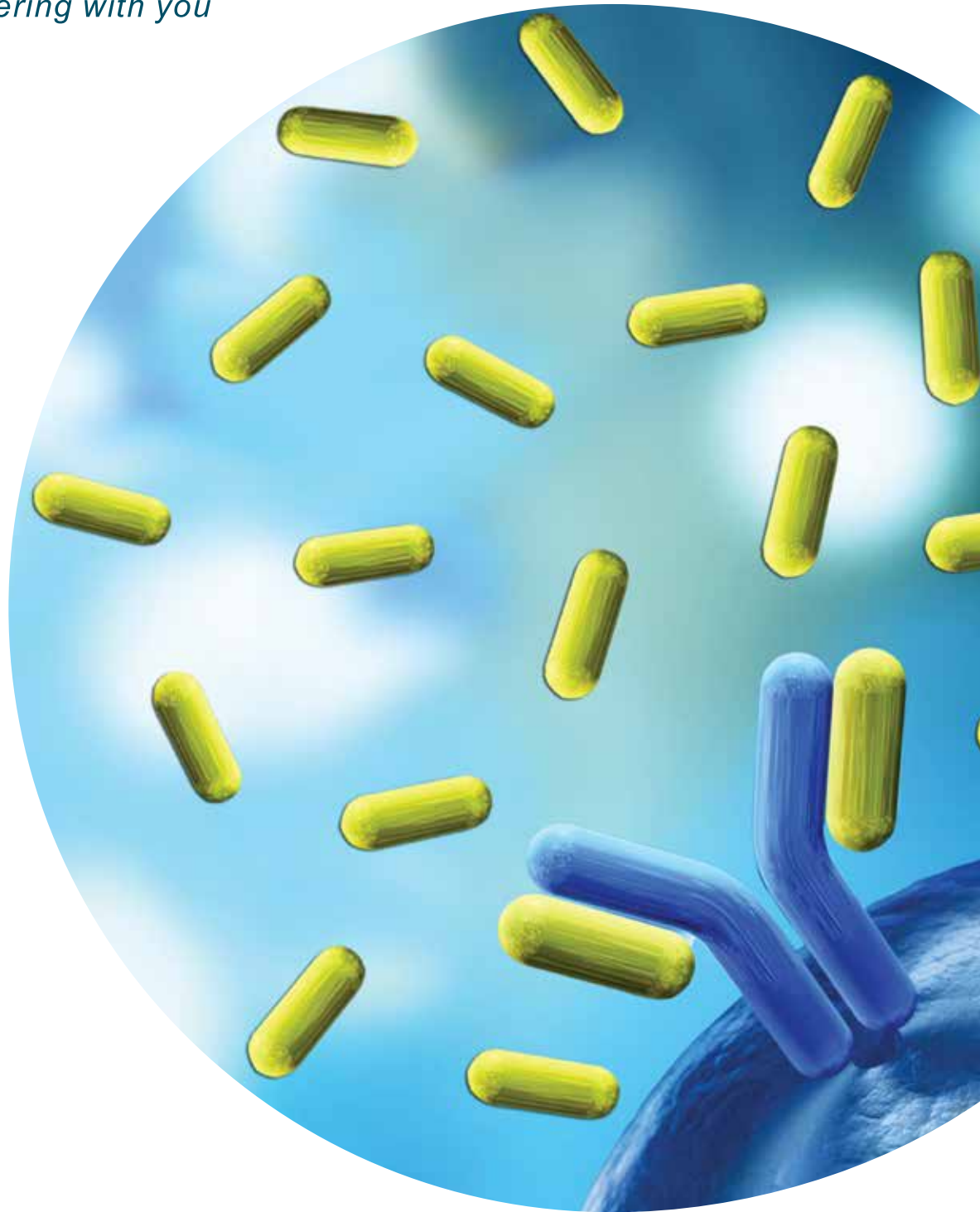




ADVY

Partnering with you



PURIFIED HUMAN LAMBDA FREE LIGHT CHAINS

PURIFIED HUMAN LAMBDA FREE LIGHT CHAINS

Product code: 00-AGN-TM-BJL-001

SALIENT FEATURES

- Bence Jones Proteins (Human Lambda Free Light Chains), manufactured from human renal failure patient pooled urine (protein type: native protein).
- Highly purified protein (>98% by SDS-PAGE).
- Negligible cross contaminants in finished product i.e. Kappa FLCs (analyzed by Nephelometry assay and western blot) and also IgG, IgA, IgM, Cystatin-C and Microalbumin (all parameters are analyzed by Immunoturbidometric method).
- Lambda Free Light Chains concentration can be customized as per customer specification.
- Extensively tested for absence of HBsAg, Anti-HCV and Anti-HIV I +II by enzyme-linked immunosorbent assay (ELISA) and for viral DNA/RNA (HBV, HIV and HCV) by Polymerase chain reaction (PCR).
- Shelf life: 2 years at 2-8°C.
- Processed at EHS compliant facility under ISO 13485 QMS.
- Advy is a primary manufacturer able to produce large lots for the IVD industry.
- Shipment can be made in preferred aliquots (Nalgene pre-sterilized bottles used).
- Labeling compliant with global regulatory requirements.
- Secondary and Tertiary packaging validated for cold-chain shipment.

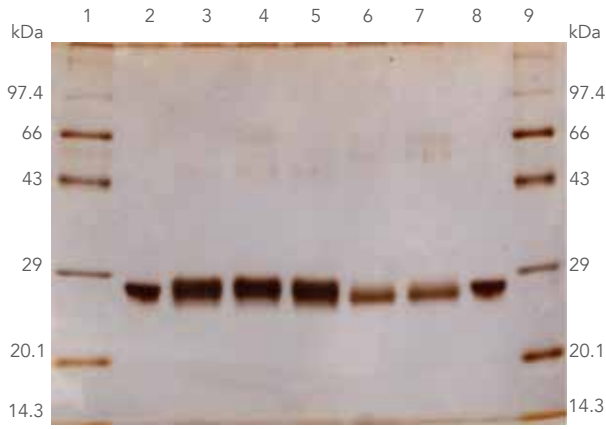
SUITABILITY

- As Controls and Calibrators in qualitative and quantitative turbidimetric, ELISA, CLIA, ECLIA and CMIA assays.
- For use in Radial Immunodiffusion, Immunoelectrophoresis, Western Blotting, Dot Blot and other similar assays.
- For development of target-specific assay reagents.
- In cancer research and development processes.
- As an immunogen to raise antibodies in animals.
- As a ligand for immunoaffinity purification.

SPECIFICATIONS

Test Parameters	Acceptance Criteria
Physical Appearance	Colorless to pale yellow solution
Formulation	Liquid
Shelf life	2 years
Concentration	≥ 1.0 mg/ml (Nephelometry method)
Buffer details	50mM Phosphate buffer, 150mM Sodium chloride pH7.4 ± 0.2
Preservative	0.1% Sodium azide
Purity	≥ 98% (SDS-PAGE)
Cross Contaminants	≤ 1%: Kappa free light chain, IgG, IgM, IgA, Cystatin-C and Microalbumin
HBsAg, Anti-HCV and Anti-HIV I +II	Negative (ELISA Assay)
HBV DNA	Not Detected (PCR Analysis)
HIV DNA	Not Detected (PCR Analysis)
HCV RNA	Not Detected (PCR Analysis)
Syphilis	Non Reactive
Storage conditions	2 to 8°C

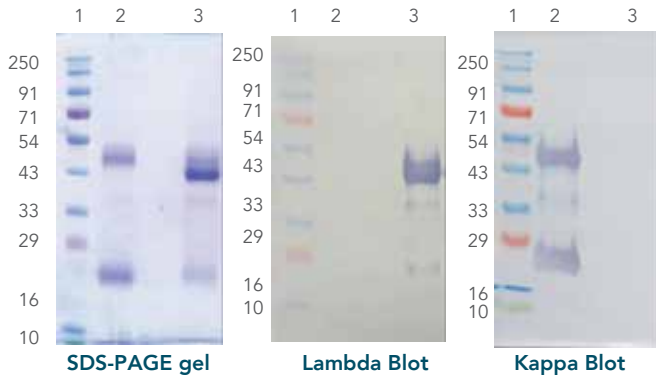
**COMPARISON WITH
COMMERCIALLY AVAILABLE
LAMBDA FREE LIGHT CHAINS**



12% SDS-PAGE Reducing gel

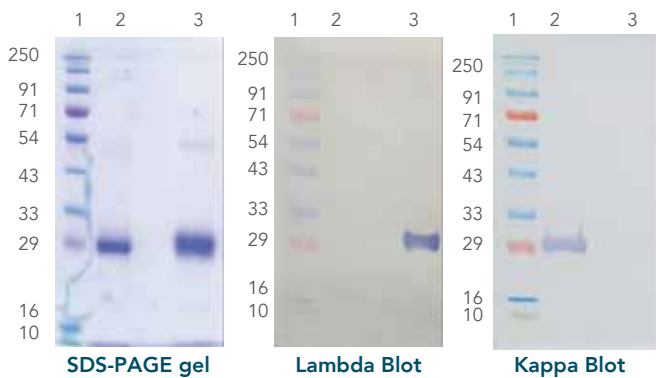
Lane -1	Marker protein
Lane - 2	Commercial sample
Lane - 3	BJL T-001/0118
Lane - 4	BJL T-002/0318
Lane - 5	BJL T-003/0418
Lane - 6	BJL T-004/0918
Lane - 7	BJL T-005/0919
Lane - 8	Commercial sample
Lane - 9	Marker protein

**IDENTIFICATION AND PURITY PROFILE
OF ADVY'S LAMBDA FREE LIGHT CHAINS**



Non reducing conditions

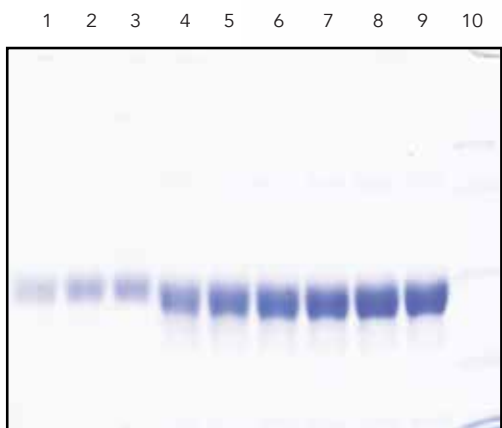
Lane-1	Marker Protein
Lane-2	Kappa FLC control
Lane-3	Advy purified Lambda FLC



Reducing conditions

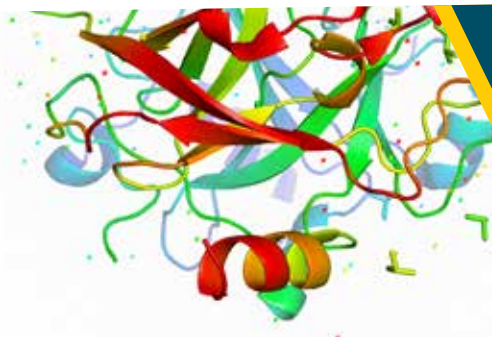
Lane-1	Marker Protein
Lane-2	Kappa FLC control
Lane-3	Advy purified Lambda FLC

HIGHLY PURITY ILLUSTRATED BY SDS PAGE ANALYSIS

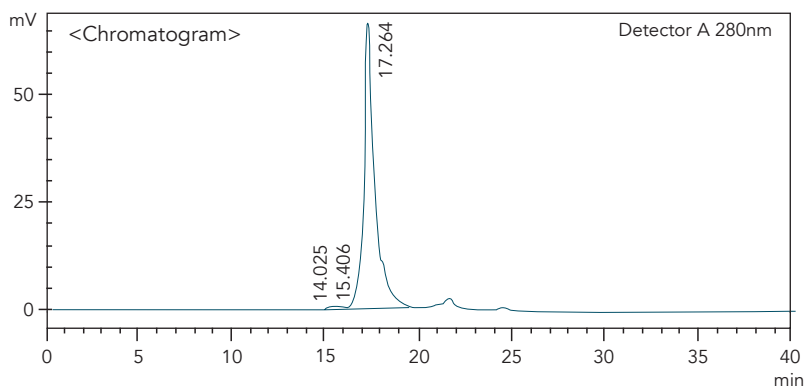


12% SDS-PAGE Reducing gel (CBB stain)

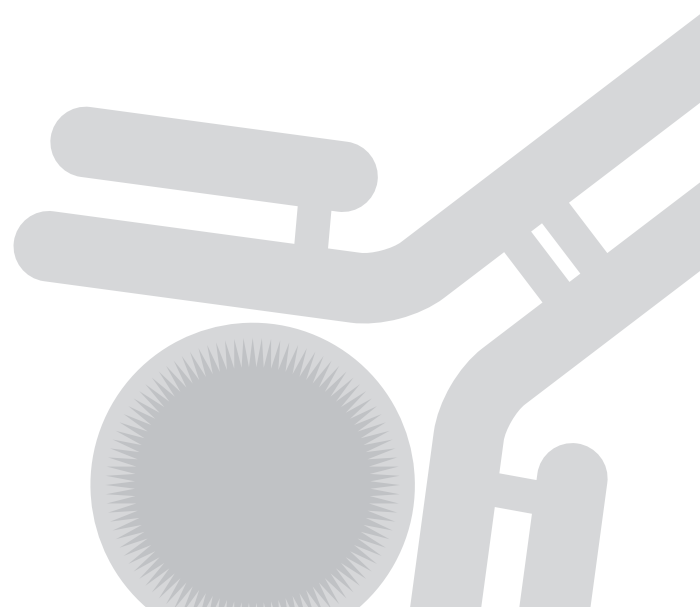
Lane - 1	5.0 µg Lambda FLCs
Lane - 2	7.0 µg Lambda FLCs
Lane - 3	9.0 µg Lambda FLCs
Lane - 4	11.0 µg Lambda FLCs
Lane - 5	13.0 µg Lambda FLCs
Lane - 6	15.0 µg Lambda FLCs
Lane - 7	17.0 µg Lambda FLCs
Lane - 8	20.0 µg Lambda FLCs
Lane - 9	22.0 µg Lambda FLCs
Lane - 10	Marker protein



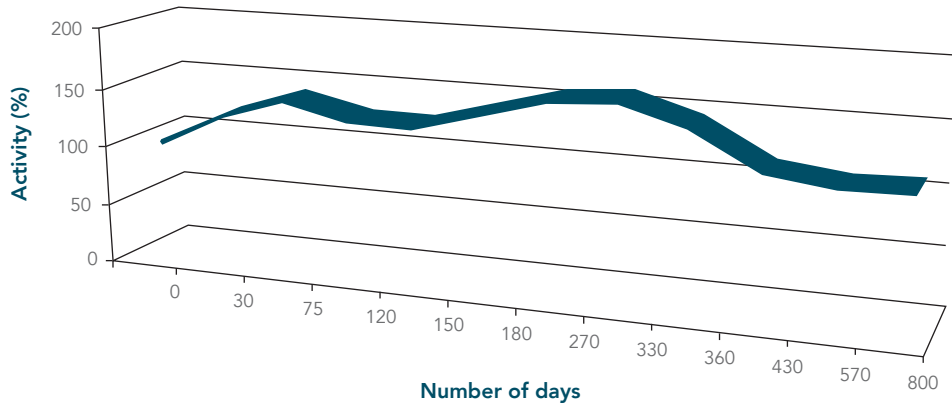
HIGH PURITY AS CONFIRMED BY SEC-HPLC



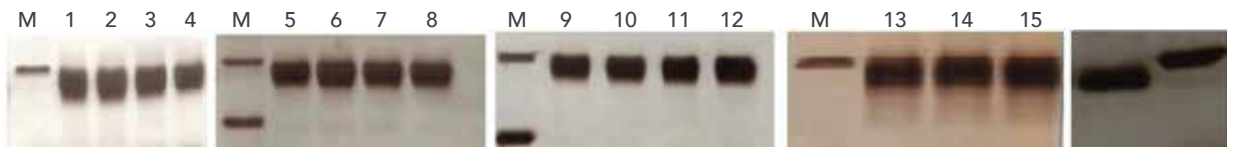
Detector A 280 nm			
Peak#	Ret. Time	Area	Area %
1	14.025	1638	0.055
2	15.406	20275	0.678
3	17.246	2969213	99.267
Total		2991126	100.000



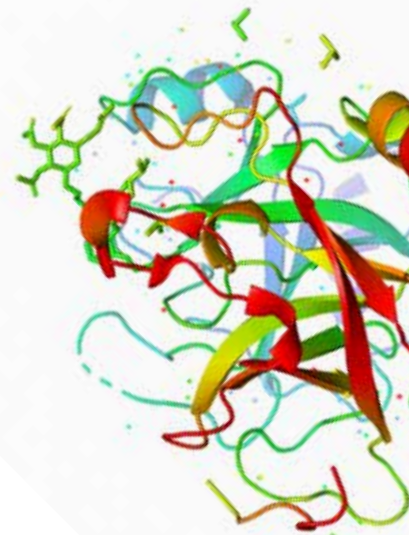
SHELF LIFE (REAL TIME STABILITY STUDIES)



Stability profile of Kappa free light chains (2-8°C), exhibits better activity up to 800 days by using Binding Site Freelite human Lambda free kit (Siemens BN Prospec Nephelometer)



SDS PAGE Profile for Real Time Stability Studies. Lane M: Marker protein; Lane 1 to 16: Purified lambda free light chains sample of 0, 15, 30, 45, 120, 150, 180, 210, 245, 270, 300, 330, 360, 430, 570 and 800 days respectively.





ADVY

Partnering with you

CORPORATE OFFICE:

17th Floor, Hoechst House,
Nariman Point,
Mumbai - 400 021, India
Tel: +91 22 6656 0900

PLANT ADDRESS:

Plot No. A-334/336/338, A-337 & 339
Road No. 25 & 26, Wagle Estate,
Thane - 400 604, India
Tel: +91 865 7428 612 / 613 / 614

EMAIL ADDRESS:

info@advychemical.com

WEBSITE:

www.advychemical.com