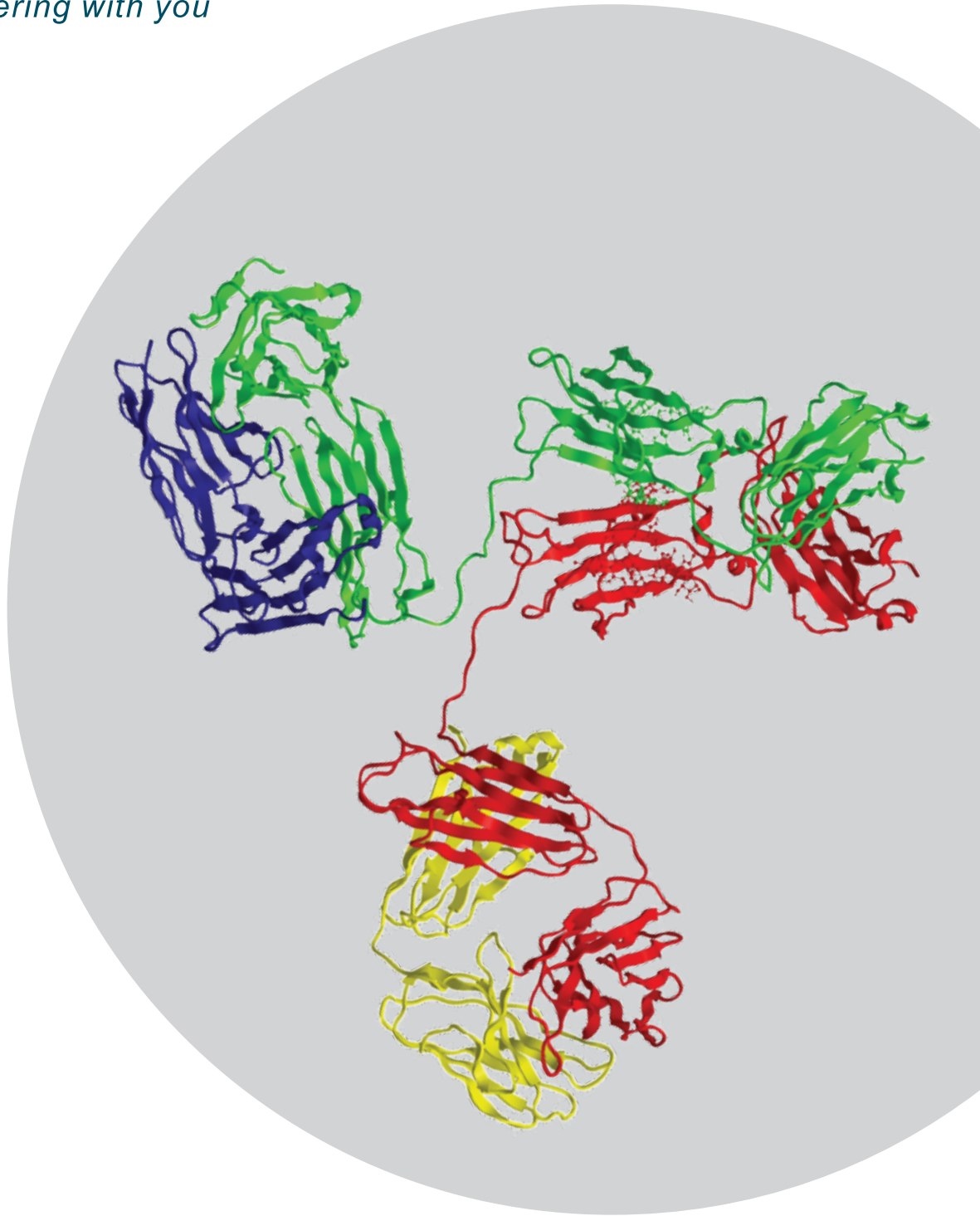




ADVY

Partnering with you



Goat Anti-Human IgM

Goat Anti-human IgM (μ - chain specific)

INTRODUCTION

Immunoglobulin M (IgM) is the first and the largest antibody produced in response to an antigen. IgM is involved in complement activation, therefore leading to opsonization of antigens and cytolysis. Elevation of IgM may occur in monoclonal gammopathies such as macroglobulinemia, primary systemic amyloidosis, monoclonal gammopathy of undetermined significance, and related disorders. Decreased levels are found in patients with primary or secondary immune deficiencies.

Anti-Human IgM can be used to diagnose Hyper-IgM syndrome which is an immunoglobulin (Ig) deficiency characterized by normal or elevated serum IgM levels and decreased levels or absence of other serum immunoglobulins, resulting in susceptibility to bacterial infections. The presence of IgM in a patient's serum indicates recent infection, or in case of a neonate's serum, indicates intrauterine infection.

As a primary manufacturer, Advy can tailor any of its products to your exact specifications.

SALIENT FEATURES

- Manufactured from serum of goats immunized with human IgM whole molecule as immunogen.
- Available in different grades including whole serum, fractionated, and can be customized as per specific requirements.
- Available in bulk quantities.
- Over 13 years of experience in stable manufacturing process ensuring batch to batch consistency.
- Stable for 3 years at 2-8 °C.
- Processed at EHS compliant facility under ISO 13485: 2016 QMS by our experienced technical staff.
- Labeling compliant with global regulatory requirements.
- Secondary and tertiary packaging validated for cold-chain shipment.

APPLICATIONS

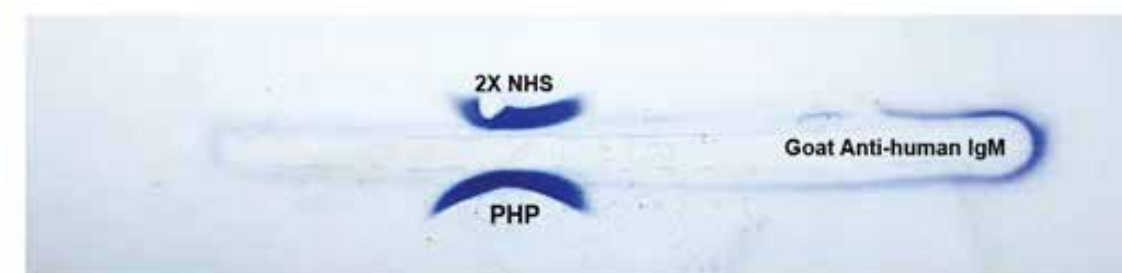
- Anti-Human IgM serum is used in various ELISA and immunohistochemistry assays.
- Anti-Human IgM is used in the development and manufacturing of various qualitative and quantitative assays based on RID, IEP, ELISA, latex enhanced immunoturbidimetric assays, ouchterlony double diffusion, western blot, and precipitin assay.

PRODUCT SPECIFICATIONS

Parameters	Product Description	
Product Name	Goat Anti-human IgM, whole serum	Goat Anti-human IgM, fractionated
Product Code	00-ABD-MM-IGM-001	00-ABD-MM-IGM-002
Host	Goat	Goat
Immunogen	Human IgM whole molecule	Human IgM whole molecule
Grade	Whole serum	Fractionated
Physical Appearance	Straw to brownish yellow clear liquid without any suspended	Clear off-white to pale yellow liquid
Buffer details	Tris saline with 15 mM NaN ₃ (Customizable)	Tris saline with 15 mM NaN ₃ (Customizable)
Titre (By Becker Method)*	≥ 8 mg/ml	≥ 8 mg/ml
Total Protein (By Biuret method)	≥ 50 mg/ml	≥ 25 mg/ml
Protein by OD @280 nm	NA	Customizable
Specificity (Immunoelectrophoresis)	Monospecific to IgM when tested against 2X NHS and PHP	Monospecific to IgM when tested against 2X NHS and PHP
Cholesterol (CHOD enzymatic method)	≤ 50 mg/dl	NA
pH	7.0 to 8.0 (Customer Defined)	7.0 to 8.0 (Customer Defined)
Storage conditions	2 to 8°C	2 to 8°C
Shelf life	3 years	3 years

* Titre is defined as the binding capacity of 1 ml of antibody with "x" mg of immunogen.

MONOSPECIFICITY OF ADVY'S GOAT ANTI-HUMAN IgM: IMMUNO-ELECTROPHORESIS



Monospecific to IgM when tested against 2X Normal human serum (NHS) and Pooled human plasma (PHP).




ADVY

Partnering with you

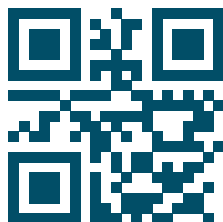
ANTIGENS | ANTIBODIES | DIAGNOSTIC KITS

 +91 865 7428 612

 info@advychemical.com

 www.advychemical.com

Ref. No.: ABD-IgM-BR-001 | Rev. No.: 00 | Date Issued: 2023-11



 @advy

 @advy_dx

 @advydx

 @advychemical