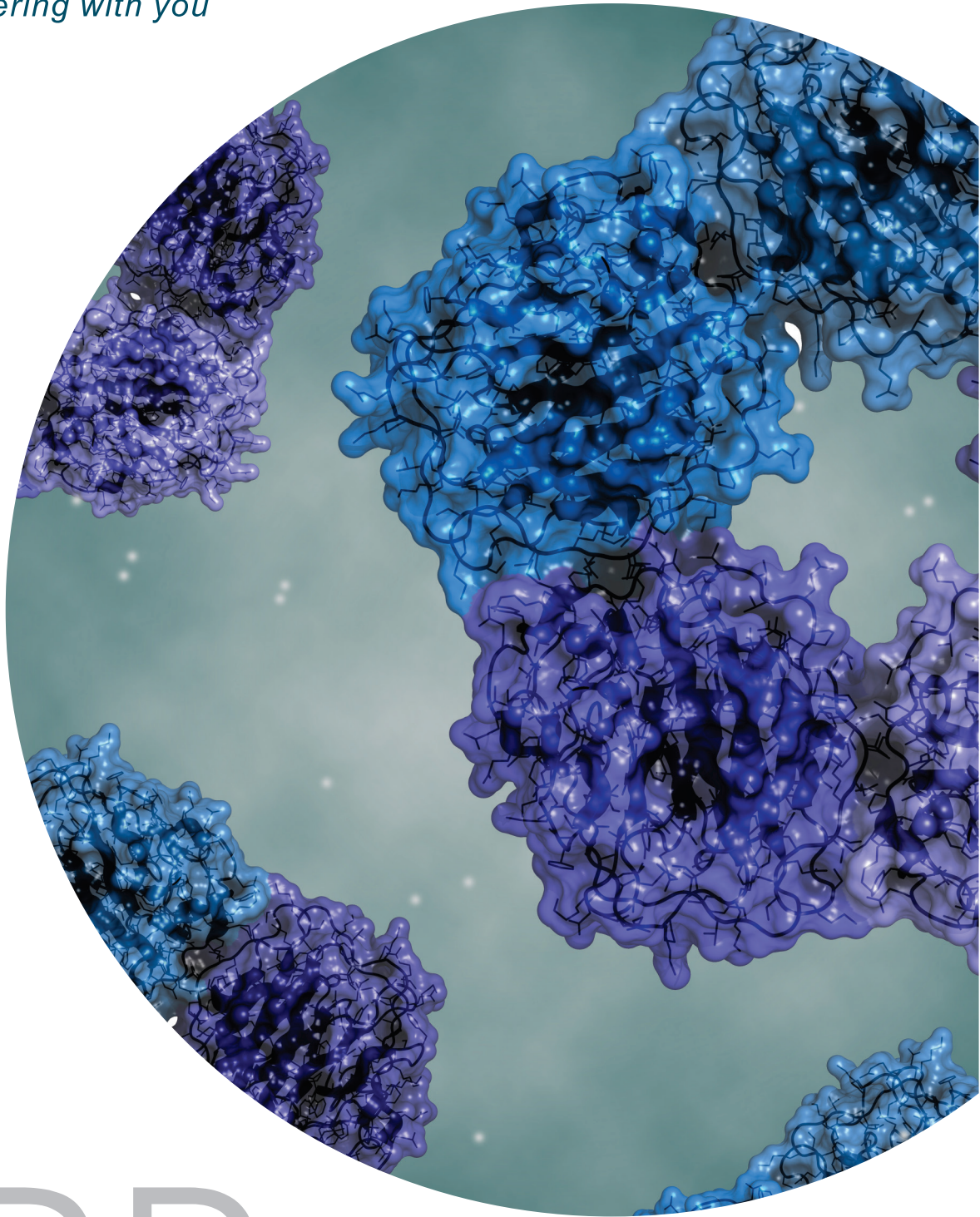




ADVY

Partnering with you



CRP

C-REACTIVE PROTEIN

SALIENT FEATURES

- Manufactured from TB Pleural Fluids and Cancer Ascites*
- Stable manufacturing process for 30+ years
- Lot size can be customized from 1gm to 200 grams
- CRP Concentration/ml can be customized for your application
- Tested for viral markers by ELISA and PCR
- High purity (>99%) by SDS PAGE
- Stable for 3 years at 2-8°C and up to 5 years at -20°C (in working aliquots) Real-time study in progress
- Material remains stable for up to 2 freeze-thaw cycles when thawing is done at 2-8°C
- Processed at EHS complaint facility under ISO 13485 QMS by trained man-power
- Shipment can be made in preferred aliquots. (Nalgene presterilized bottles used)
- Labeling complaint with global regulatory requirements
- Secondary and Tertiary packaging validated for cold-chain shipment

* collected Pan India in complete regulatory compliance.

SUITABILITY

- As immunogen (use only azide free) for raising polyclonal and monoclonal antibodies
- As antigen preparing controls and calibrators in Turbidimetry, Nephelometry, ELISA and CLIA based qualitative & quantitative assays

SPECIFICATION

Test Parameters

Physical Appearance
Shelf life
CRP Concentration
% Purity
SDS PAGE

Acceptance Criteria

Clear Protein Solution
3 years
Range 1.3 to 3.0 mg/ml (Immunoturbidimetry)
≥ 99%
Single band corresponding to Mol. Wt. of ~23 kDa
Tris-50mM at pH 8.0 ± 0.2 containing NaCl-200mM, CaCl₂ 5mM and NaN₃ -15mM
"product buffer can be customized as per customer requirement"
Negative (ELISA Assay)
Negative (ELISA Assay)
Negative (ELISA Assay)
Not Detected (PCR Analysis)
Not Detected (PCR Analysis)
Not Detected (PCR Analysis)
2 to 8°C

Anti HIV 1&2

Anti HCV

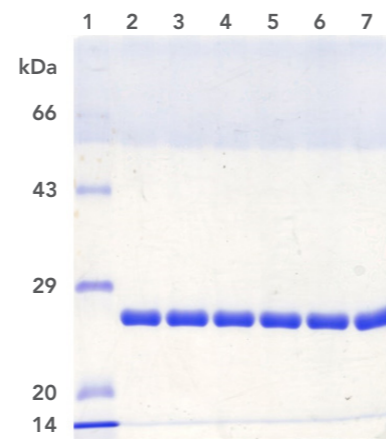
HBsAg Antigen

HBV DNA

HIV DNA

HCV RNA

Storage conditions

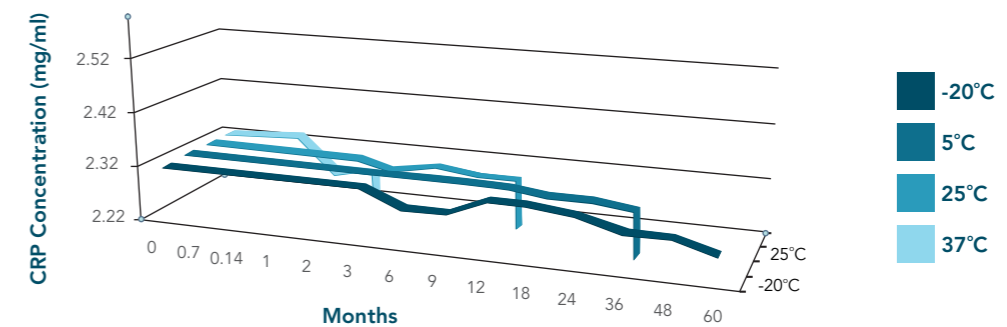
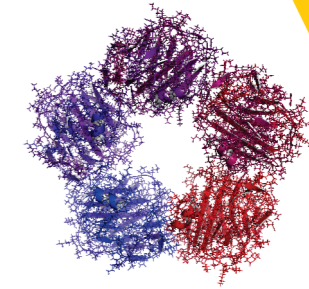


12% SDS-PAGE Reducing gel

Lanes	Sample Detail
1	Marker Proteins
2	CRP Lot # 180/0319
3	CRP Lot # 160/0318
4	CRP Lot # 140/0517
5	CRP Lot # 130/0616
6	CRP Lot # 115/1015
7	CRP Lot # 177/0119

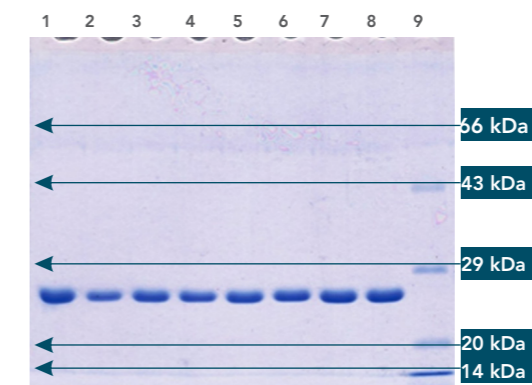
Loading concentration: 3µg each

CRP LOT 87/1113 STABILITY STUDY AT DIFFERENT TEMPERATURES



CRP is stable for 5 years at -20°C with >95% recovery | CRP is stable for 3 years at 2-8°C > 98% recovery
CRP stability @ accelerated temp of 25°C by Q10 = 4.2 years | CRP stability @ stress temp of 37°C by Q10 = 1.9 years

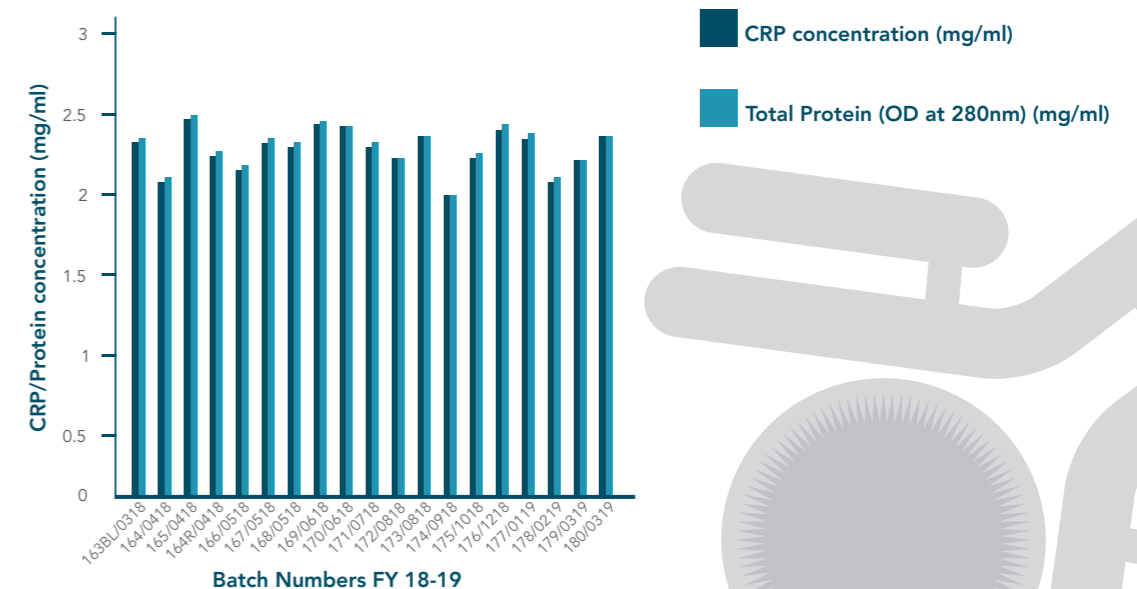
COMPARISON OF ADVY CRP WITH COMMERCIALLY AVAILABLE PRODUCTS IN MARKET



12% SDS-PAGE Reducing gel

Lanes	Sample Detail	Loading
1	Commercial 1	3 ug
2	Commercial 2	3 ug
3	CRP Lot # 180/0319	3 ug
4	CRP Lot # 160/0318	3 ug
5	CRP Lot # 140/1517	3 ug
6	CRP Lot # 130/0616	3 ug
7	CRP Lot # 115/1015	3 ug
8	CRP Lot # 177/0119	3 ug
9	Marker Protein	NA

BATCH-TO-BATCH CONSISTENCY IN THE PURITY OF CRP IN TERMS OF PROTEIN AND TURBIDIMETRIC RESPONSE



Batch Numbers FY 18-19



ADVY

Partnering with you

Product Name	Product Code	Pack Size
C-Reactive Protein	00-AGN-AP-CRP-001	2 milligrams to 1gram ; Customisation applicable as per customer requirement

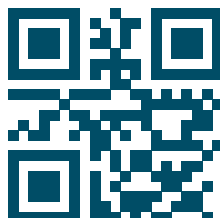
ANTIGENS | ANTIBODIES | DIAGNOSTIC KITS

+91 865 7428 612

info@advychemical.com

www.advychemical.com

Ref.No.: CRP-LBL-01 | Rev.No.01 | Date Issued: April-2023



 @advy

 @advy_dx

 @advydx

 @advychemical