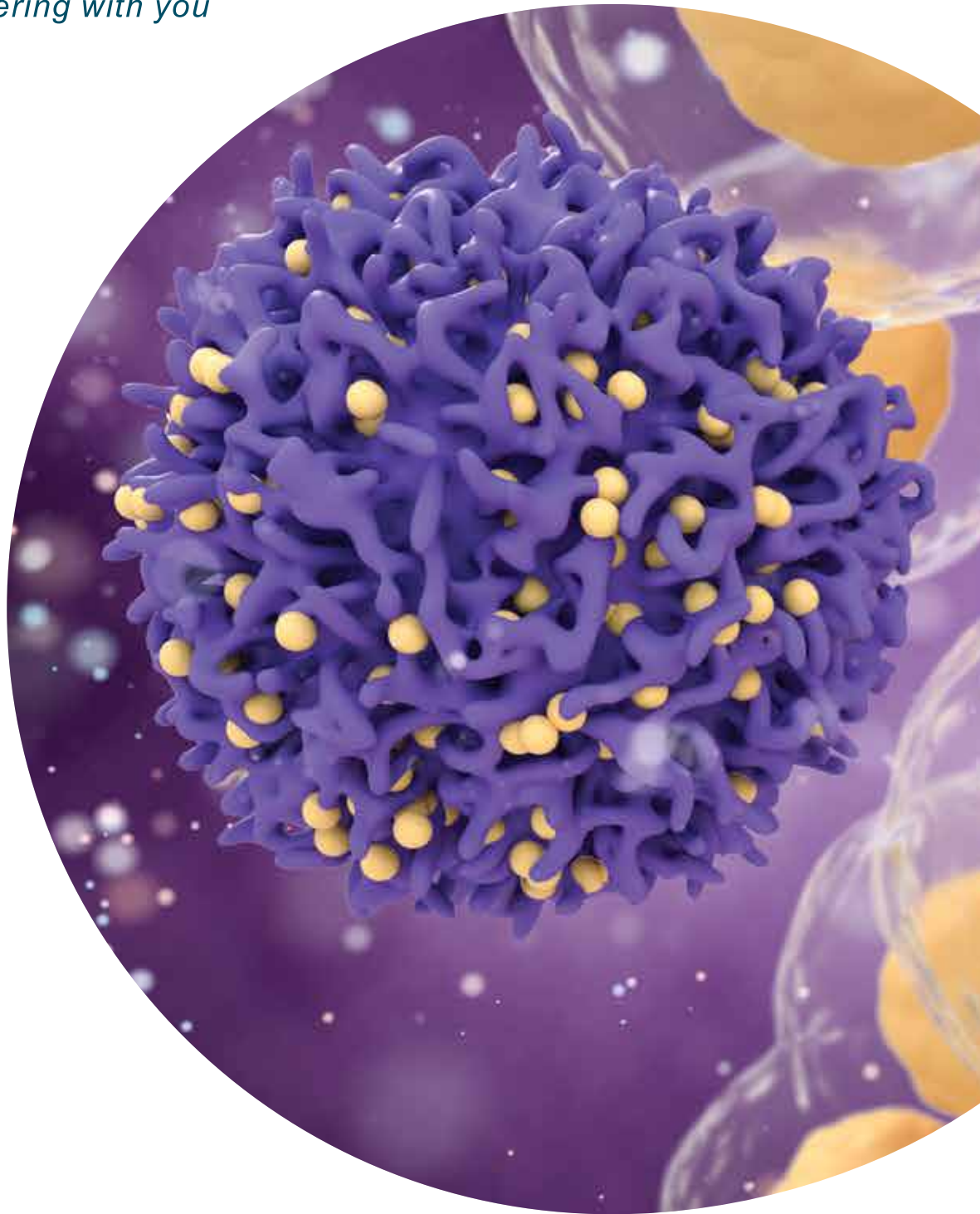




**ADVY**

*Partnering with you*



# Purified Native Human Antigens

## HUMAN PLEURAL FLUID

### INFLAMMATION

C Reactive Protein (CRP)

Native CRP - Calibrators & Controls also available

## HUMAN PLASMA

### INFECTIOUS DISEASE

Hepatitis B Surface Antigen Subtype Ad

Hepatitis B Surface Antigen Subtype Ay

## HUMAN CORD BLOOD

### CANCER

Alpha-feto protein (AFP)

## HUMAN PLACENTA BLOOD

Pregnancy Associated Plasma Protein A (PAPP-A) Antigen

## HUMAN ASCITES FLUID

### CANCER

Breast Cancer Antigen CA 15-3

Gastrointestinal & Gynecological Cancer antigen CA 72-4

Gastrointestinal Cancer Antigen CA 19-9

Ovarian Cancer Antigen CA 125 /  
Carbohydrate Antigen 125 (CA 125)

## HUMAN URINE

### RENAL FUNCTION

Alpha-1-Microglobulin (A1M)

Beta-2-Microglobulin (B2M)

Beta-2-Microglobulin Lyophilized (B2M)

Cystatin C

### CANCER

Bence Jones Protein - Kappa Free Light Chain

Bence Jones Protein - Lambda Free Light Chain

Regulatory compliant for  
biomedical fluid collection

SHE (EHS) Compliance from  
points of collection to point  
of Discard of unused material

Pan India network  
for collection of  
biomedical fluids

Institutional  
permissions  
at point of  
collection

**ADVY  
ADVANTAGE**

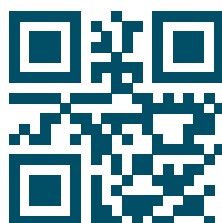
**ANTIGENS | ANTIBODIES | DIAGNOSTIC KITS**

+91 865 7428 612

info@advychemical.com

www.advychemical.com

Reference No.: AGD-LBL-01 | Version No.: 05 | Date Issued : 2024-10



@advy

@advy\_dx

@advydx

@advychemical