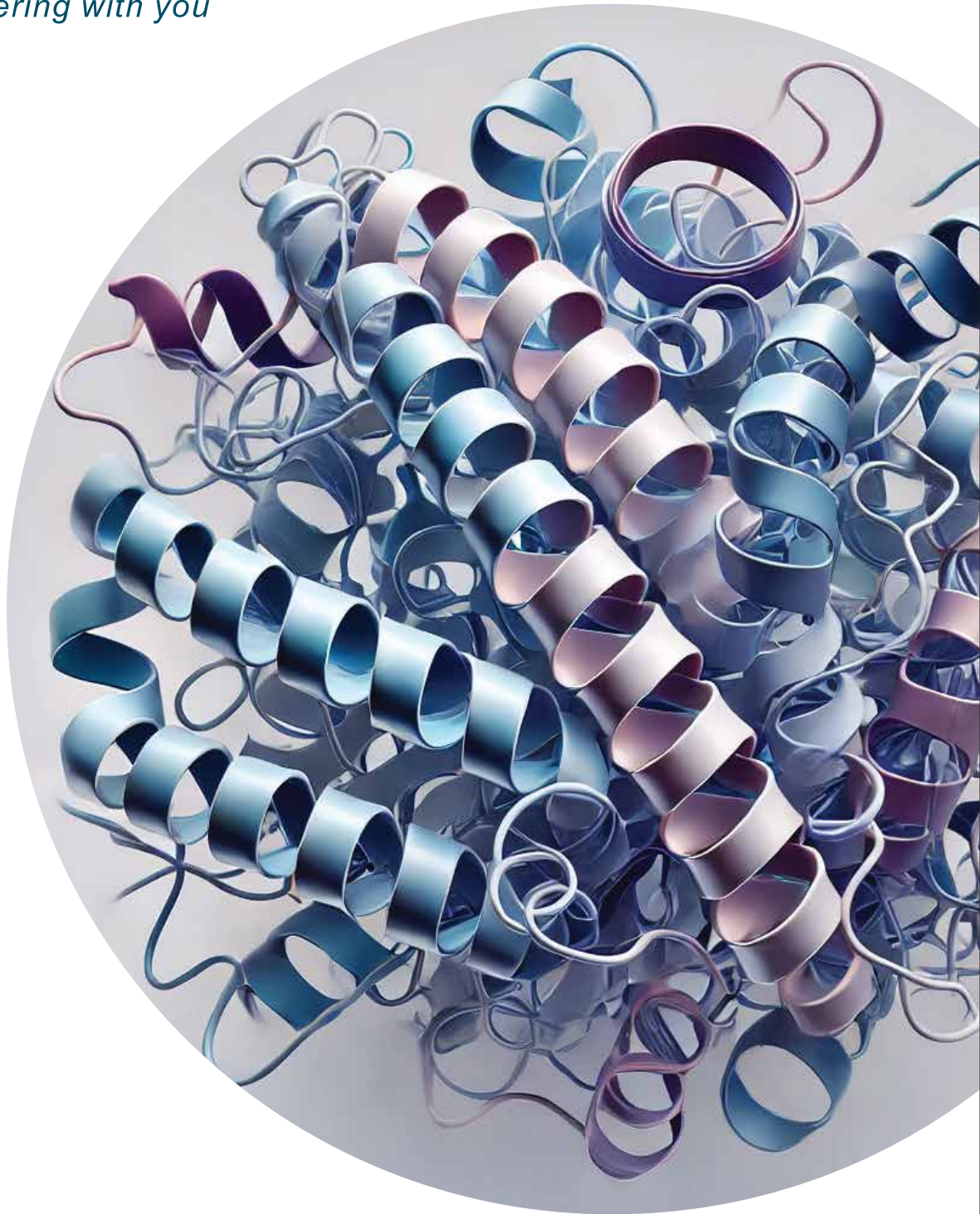


ADVY

Partnering with you



CEA

Carcinoembryonic Antigen

Your Trusted Partner in Advancing Cancer Research

Carcinoembryonic Antigen (CEA)

DESCRIPTION

Carcinoembryonic Antigen (CEA) is a vital tumour marker associated with various types of cancers, most notably colorectal cancer. Its role extends to monitoring cancer recurrence and assessing prognosis.

CEA is a highly glycosylated protein marker that belongs to the immunoglobulin family, specifically the CEA-related cell adhesion molecules (CEACAMs). It has a molecular weight ranging between 180 to 200 kDa. This CEA antigen is meticulously purified from human cancer fluid using advanced chromatographic techniques and is rigorously identified through immunoassays (ELISA, ECLIA, CMIA)

KEY FEATURES

- High pure grade CEA Antigen.
- Utilized in various immunoassays (ELISA, ECLIA, CMIA) as a:
 - Calibrator and control preparation.
- Reliable reference material for research activities.

APPLICATIONS

- Development and standardization of diagnostic tests.
- Cancer research and therapeutic studies.

PRODUCT SPECIFICATIONS

Test Parameters	Acceptance Criteria
Physical Appearance	Colorless to pale yellow liquid
Total Protein Concentration	As observed (OD at 280 nm)
Specific Activity	By Roche Cobas ECLIA
Purity Determination	>95% (SDS-PAGE)
Viral Marker Tests:	Negative for HBsAg, Anti-HCV, Anti-HIV I & II (by ELISA) Not detected for HIV DNA, HCV RNA, HBV DNA (by PCR)
Bioburden	≤ 10 cfu/ml (Spread Plate Method)

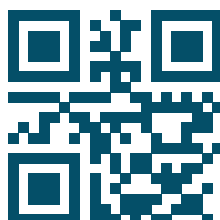
ANTIGENS | ANTIBODIES | DIAGNOSTIC KITS | WOMEN'S HEALTH CARE

+91 865 7428 612

info@advychemical.com

www.advychemical.com

Reference No.: BR/2025/02 | Version No.: 00 | Date Issued : 2025-02



@advy

@advy_dx

@advydx

@advychemical